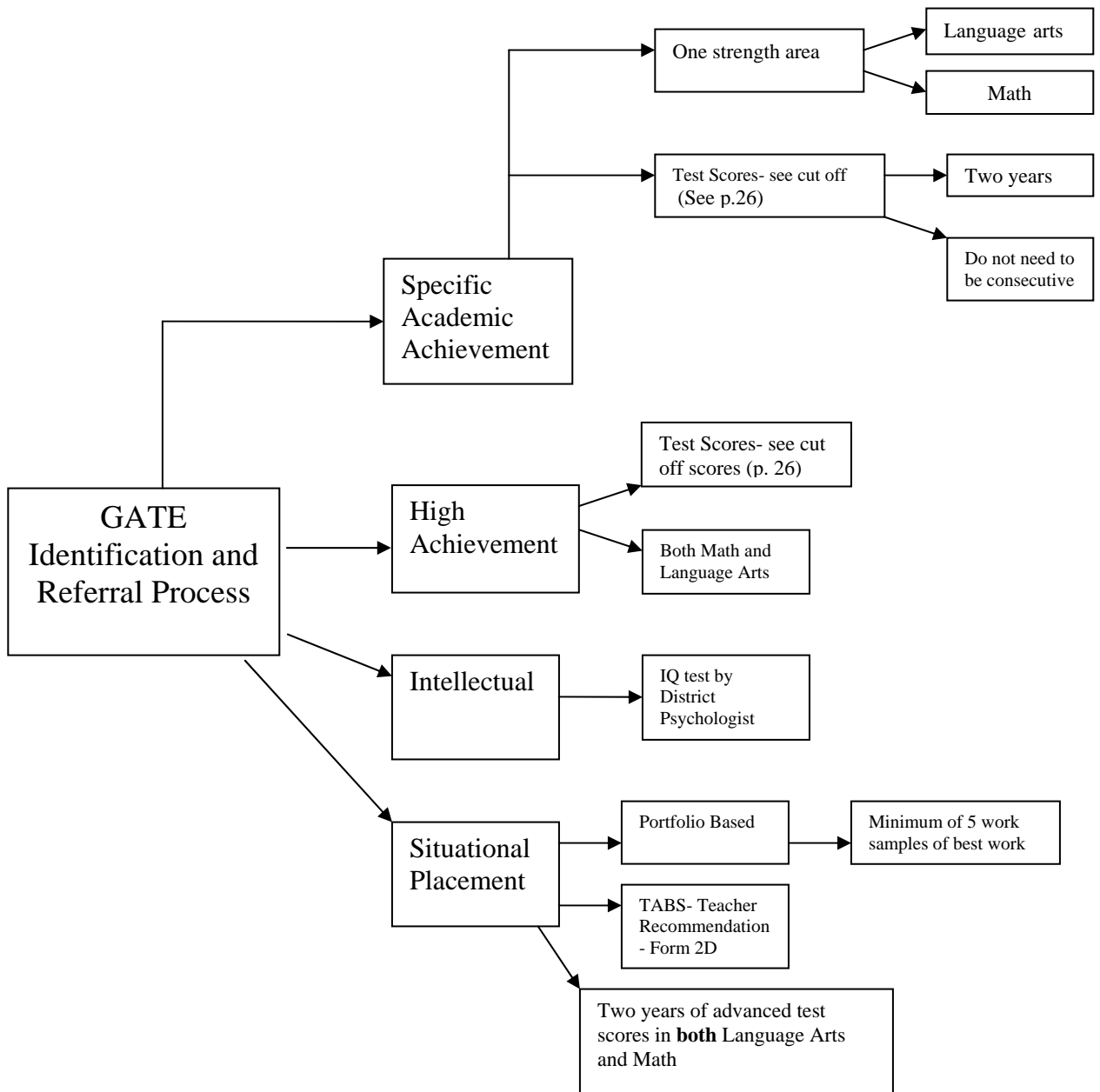


Form 1D-  
Flow Chart



**Cut Off Scores on the CST:**  
 Grade 3 Requires **BOTH** ELA450+ and EMA 520+  
 Grades 4-6: ELA 450+ *or* EMA 520+ (two years in this score range)  
 Grades 7-8: ELA 450+ *or* EMA 500+ (two years in this range)  
 Revised: 2-23-12 cmc